

Tract 12, Upper Slate Creek

Lander, Wyoming

BEAUTIFUL 2 BEDROOM/2 BATH CABIN LOCATED IN THE UPPER SLATE CREEK AREA OF SOUTH PASS.



If spectacular views of the Southern Wind River Mountains and the Red Desert's Oregon Buttes are what you're after, then this is the place for you.

Situated on a beautiful 35 acre parcel, this cabin is a must see. Nestled amidst a mature aspen stand, this high quality cabin has all of the features that you could ask for.

2 bedrooms, 2 baths, and a spacious living

room and loft make this 1,700 square foot cabin the perfect mountain getaway. There is even a 30' by 30' garage to store all of your toys.

Exclusive access to Rock Creek Reservoir and a gated entrance to the Shoshone National Forest.

Fred Goffstein

Licensed Owner/Broker

307-840-1981

fmgoff@wyoming.com



Fred Goffstein
Licensed Owner/Broker
National Cell: 1-307-840-1981
Dubois Cell: 1-307-450-4999
fmgoff@wyoming.com



BEAUTIFUL VIEWS FROM ALL ANGLES



TOP QUALITY CONSTRUCTION



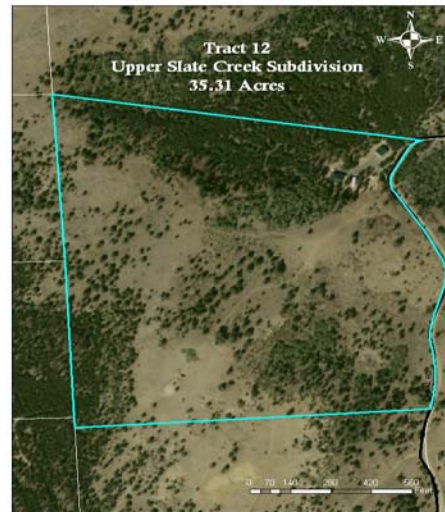
MATURE ASPEN AS SEEN FROM BEDROOM BALCONY



SPACIOUS LIVING AREA

CABIN AMENITIES:

- LOW VOLTAGE ELECTRIC (200 AMPS)
- PEX PIPE
- WOOD HEAT
- EXCELLENT WELL
- ASPEN CEILING
- OAK FLOORING
- HICKORY CABINETS
- 50 AMP RV HOOK-UP
- HIGH QUALITY APPLIANCES
- MUCH MORE!



OFFERED AT \$499,900
CALL 307-840-1981 TO SCHEDULE YOUR SHOWING